




#geoinquietos Cantabria

La web móvil está aquí...



`</head>`
`<body>`

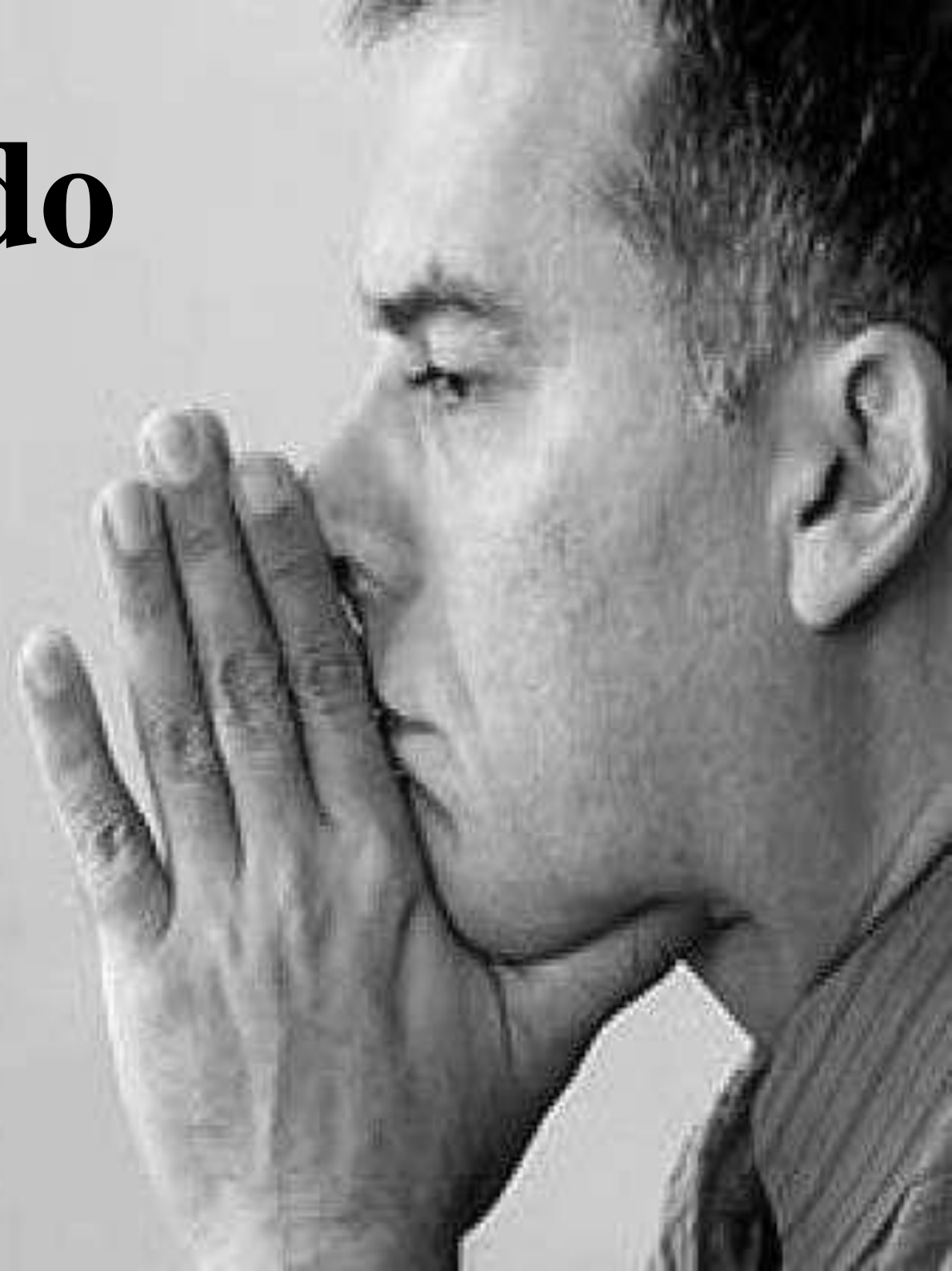
un tranquilo **programador web**

Teclando HTML, CSS y Javascript



Preocupado

por cosas como
960px, jQuery
o el #IE



Pero de un tiempo
para acá...

Bla, bla, iphone, android...

Bla, bla, bla, tablets...

Bla, bla, bla, bla, html5...

REVOLUCIÓN M



Eso debe ser algo como...



Web móvil

o tal vez no...

La web **Móvil**

Una visión, una experiencia y algunas herramientas

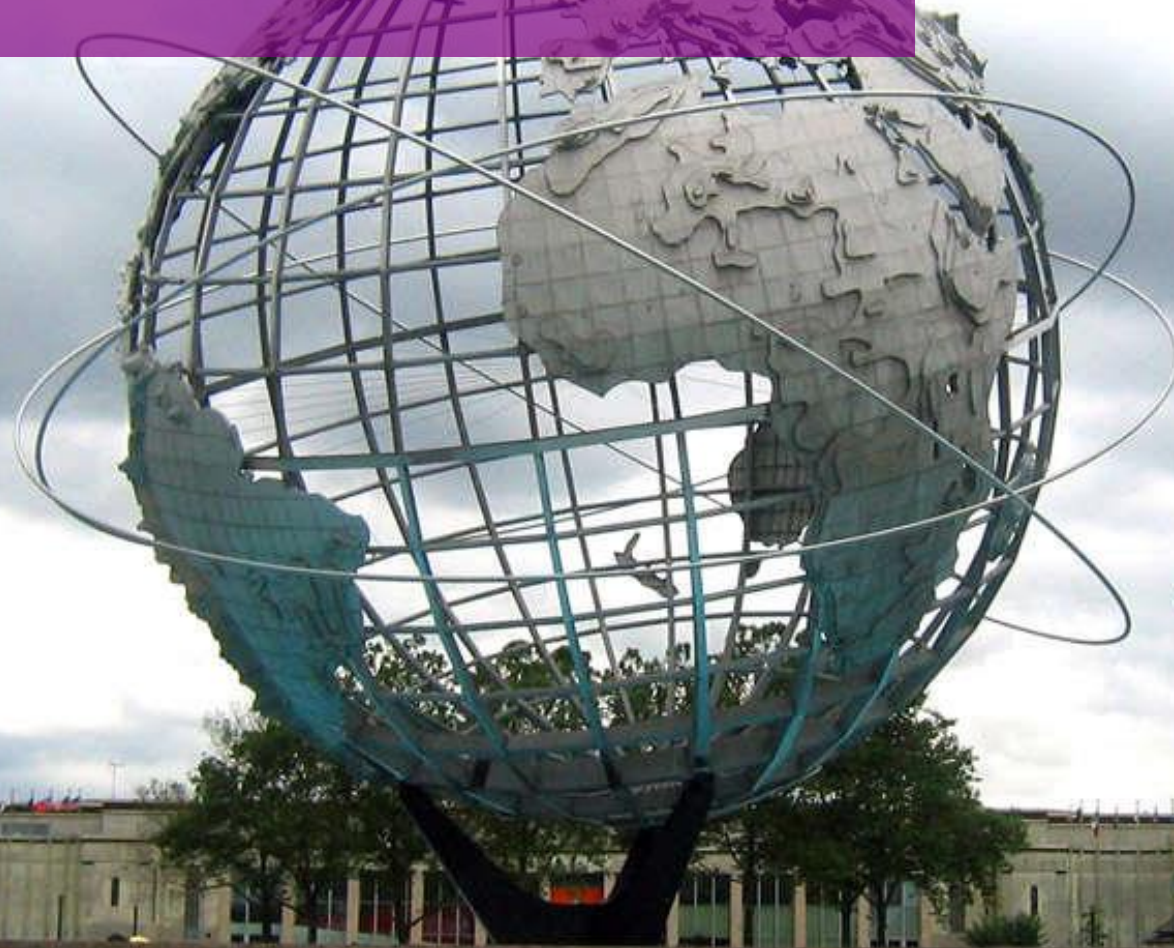
@VictorVelarde

A person wearing glasses and a grey sweater is holding a smartphone in their right hand. The phone screen displays a map application. The background is a vast, hazy mountain range under a cloudy sky. The text 'Parte 1: Visión del contexto' is overlaid on a dark horizontal band across the middle of the image.

Parte 1: Visión del contexto

¿Cómo es de importante
el fenómeno?

6.854 millones





5.000 millones
con móvil

¿Y en España?



En España

55,73 mill.

A large crowd of Minions from the movie 'Despicable Me' is shown in the background. The Minions are yellow, wearing blue overalls and goggles, and are all smiling and looking towards the camera. The background is a solid blue color.

7.527.000

con **Internet móvil**

¿Qué móviles?





Diversidad
de dispositivos

A hand holding a smartphone displaying a financial dashboard app. The app shows a 'Dashboard' with various financial metrics. A large white '40%' is overlaid on the screen. In the background, a cup of coffee is visible on a saucer.

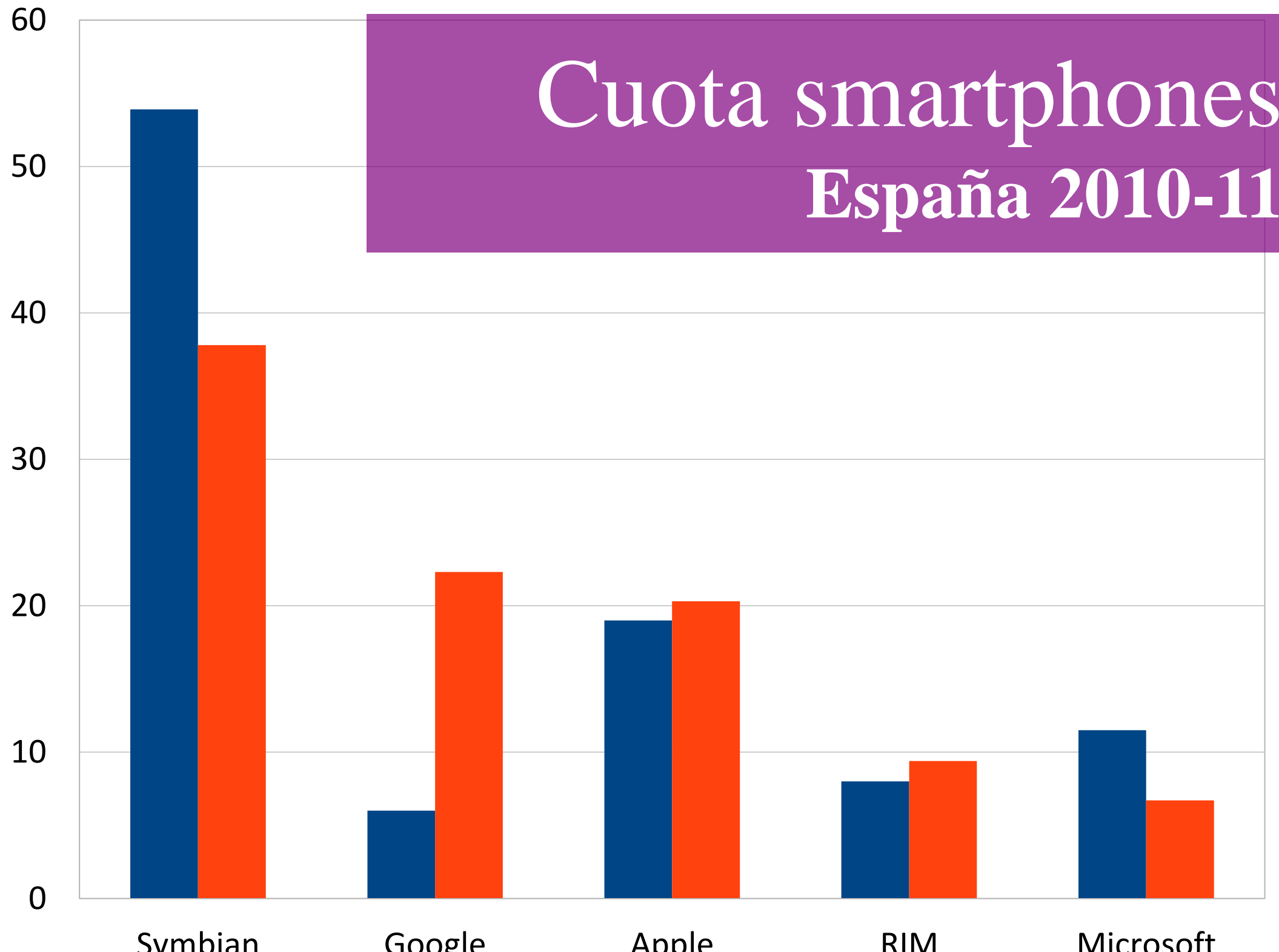
40%

smartphones

Símbolo



Cuota smartphones España 2010-11



¿Qué hay sobre su capacidad de trabajo?

1946 – ENIAC

El primer ordenador



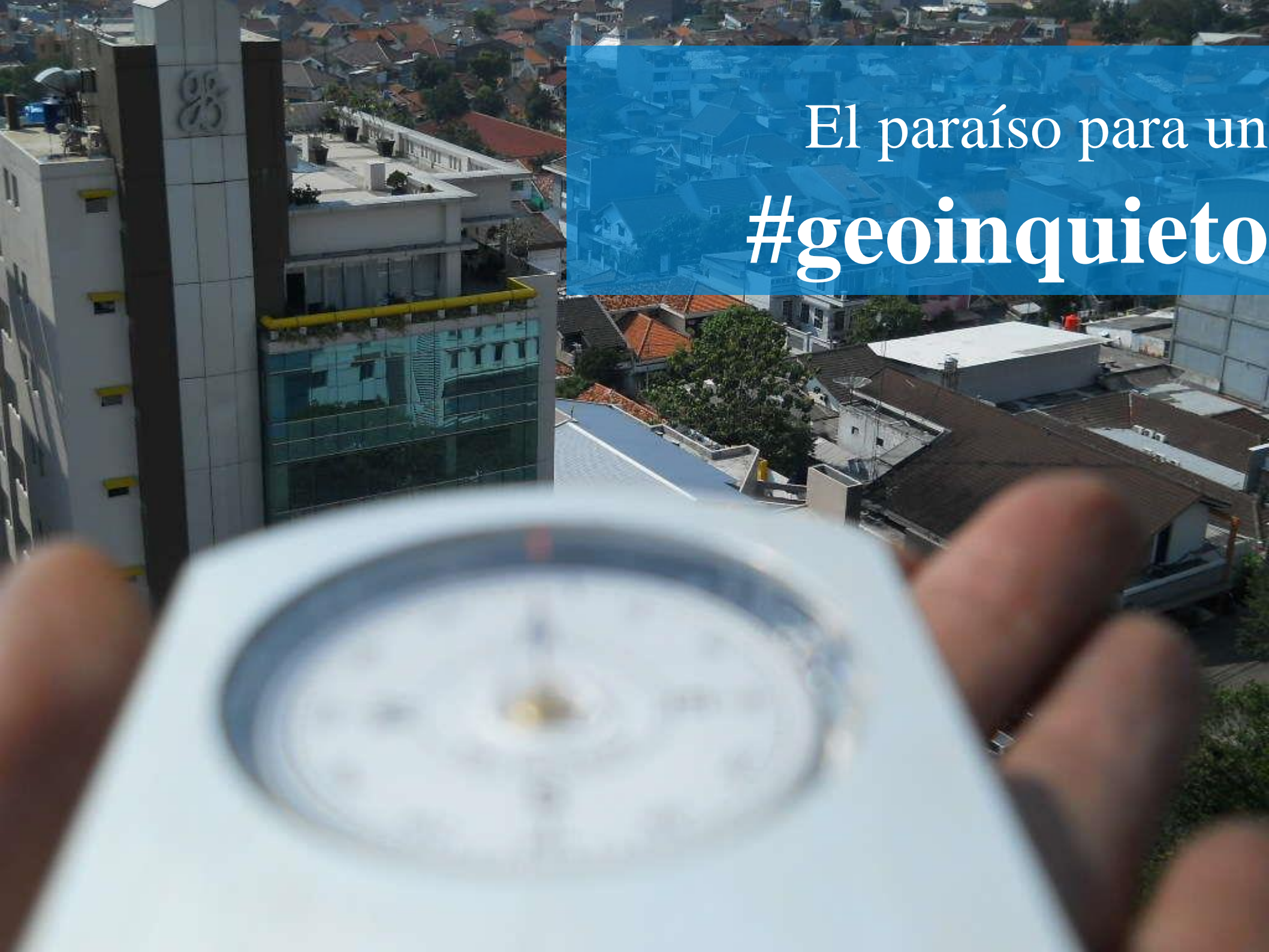
2011 – Samsung Galaxy S2

000 veces + rápido
en 116 gramos





Multifunción: agenda, música,
sensores... ++ **Internet & GPS**

An aerial photograph of a city with a mix of modern and traditional buildings. In the foreground, a hand holds a white compass, which is out of focus. A semi-transparent blue banner is overlaid on the top right of the image, containing white text. The background shows a dense urban landscape with various rooflines and structures.

El paraíso para un
#geoinquieto

Hoy sólo él tiene un
Galaxy S2
con Internet





En 2 años
cualquiera
lo tendrá...

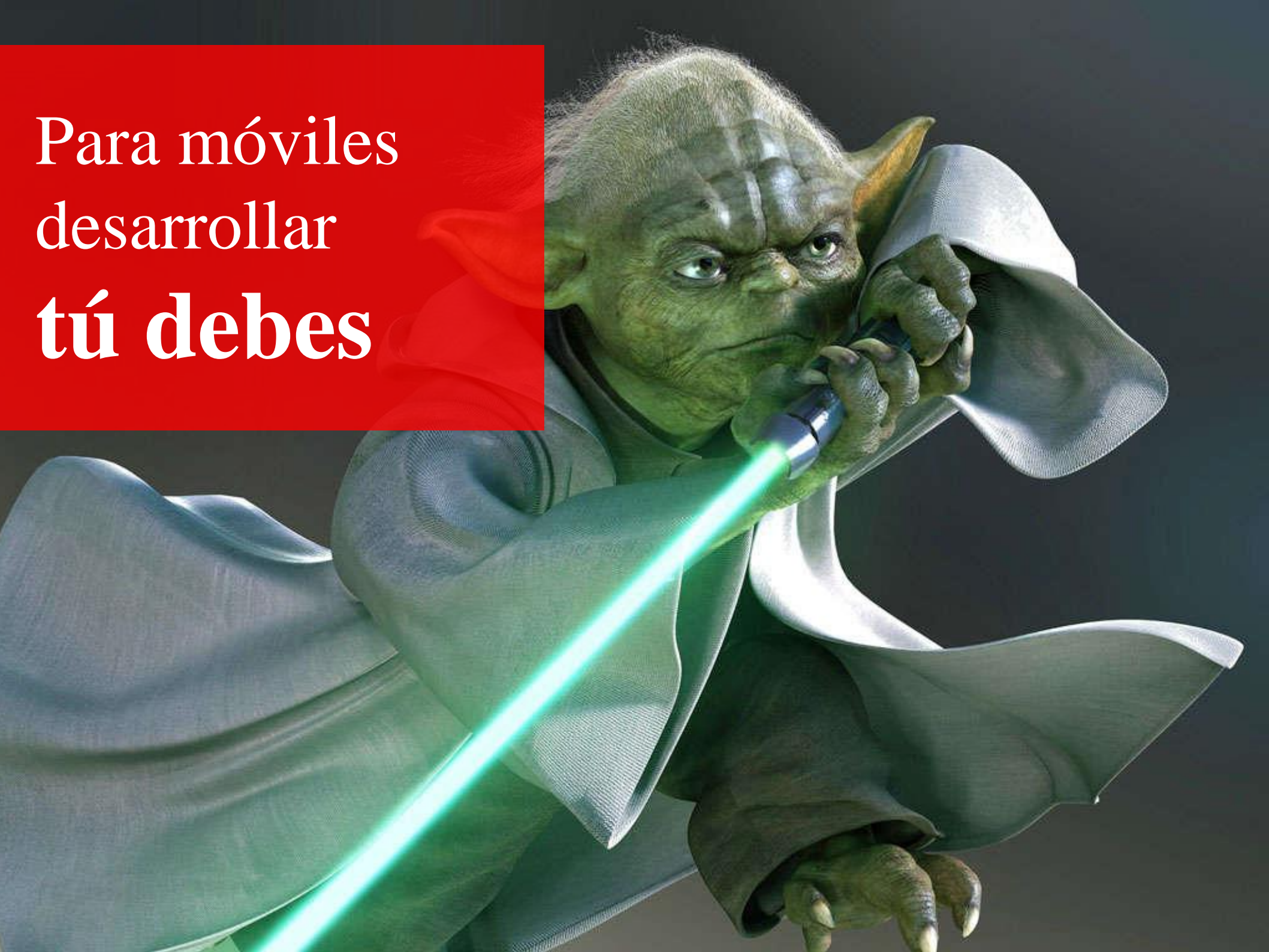


por no hablar de

#tablets

La web móvil es y será esencial

Para móviles
desarrollar
tú debes



A group of children are running across a grassy field under a blue sky with scattered clouds. They are holding strings of colorful balloons in various colors including yellow, orange, blue, pink, and green. The children are seen from behind, moving away from the camera. A dark grey rectangular box is overlaid in the center of the image, containing the text 'Parte 2: Experiencias' in white serif font.

Parte 2: Experiencias

¿Cómo empieza la cosa?

IH Cantabria & ciclo del agua





Desarrollo software

Info tiempo real

www.redvigia.es



El proyecto



Surf Spots



www.surfspots.es
The ultimate surf forecast

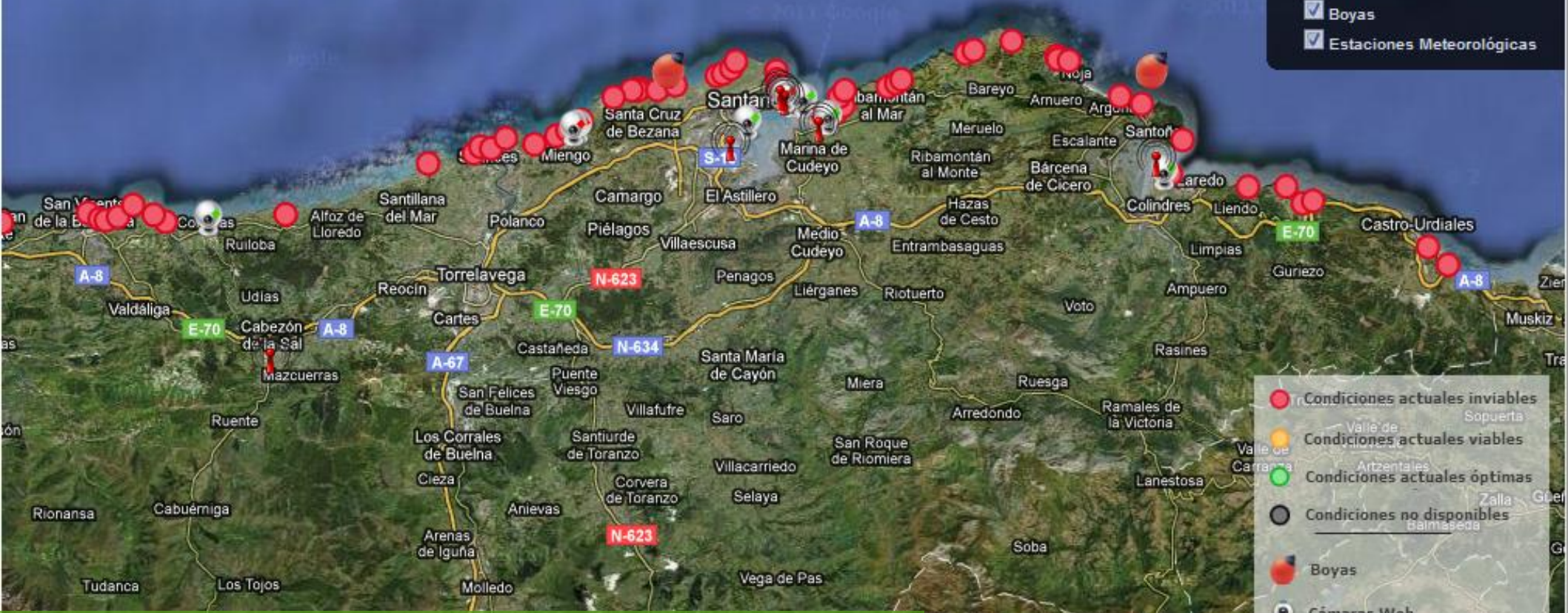


baseLayer

- Mapa Híbrido
- Mapa Físico
- Mapa Satélite
- Mapa Callejero

overlays

- WebCams
- Boyas
- Estaciones Meteorológicas



- Condiciones actuales inviabil
- Condiciones actuales viables
- Condiciones actuales óptimas
- Condiciones no disponibles
- Boyas
- Cámaras Web

Navegadores recomendados

Mashup OpenLayers

ería interesante una versión móvil

Versión móvil con jQuery Mobile



En acción...



surfspots.es



www.surfspots.es
The ultimate surf forecast

Cerca de aquí



Spots



Webcams



Estaciones



Por región



Spots



...fin demo



jQuery Mobile & OpenLayers

ASP .NET (IIS)

Matlab

**Servicios y datos
boyas (FTP)**

SQL Server & Funciones espaciales

La web móvil está a **nuestro alcance**

Parte 3: Herramientas



¿Cómo desarrollo para móviles?



Lo nativo
es mejor...



iOS: Objective C + XCode + SDK



Android: java + eclipse + SDK

symbian

Symbian: C++/J2ME + eclipse + SDK

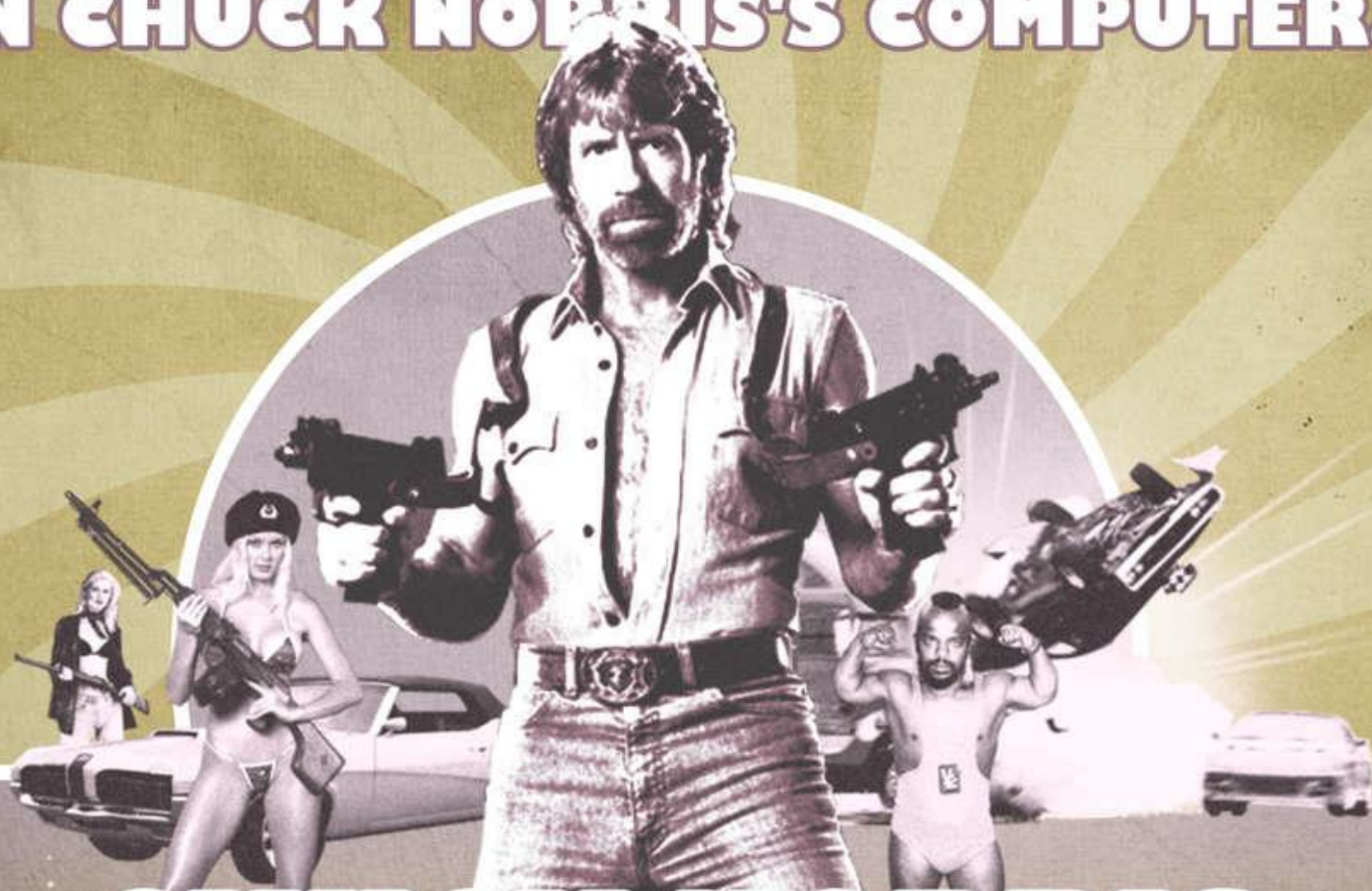


Windows[®] phone

Windows: C# + Visual Studio + SDK

én puede hacerlo para todas las pl

**THERE IS NO 'CTRL' BUTTON
ON CHUCK NORRIS'S COMPUTER.**



**CHUCK NORRIS
IS ALWAYS IN CONTROL.**

**CANNIBAL
MIDGETS**



...o un
buen Equipo



Porque lo nativo =
fragmentación

A dark, cavernous space with a glowing sign that reads "EL INFIERNO" and a pool of lava in the background. The sign is made of yellow lights and is set against a dark, arched opening. The background is a dark, rocky cave with a pool of glowing red and orange lava in the lower right corner.

EL
INFIERNO

del programador...

¿Alternativas?

ROCKY[®] IV



Web móvil vs. aplicación nativa

VENTAJAS

**Diseño
+ fácil**

**Implementación
+ fácil**

**Seguridad &
control**

DESVENTAJAS

APIs nativas

**Accesibilidad
- icono**

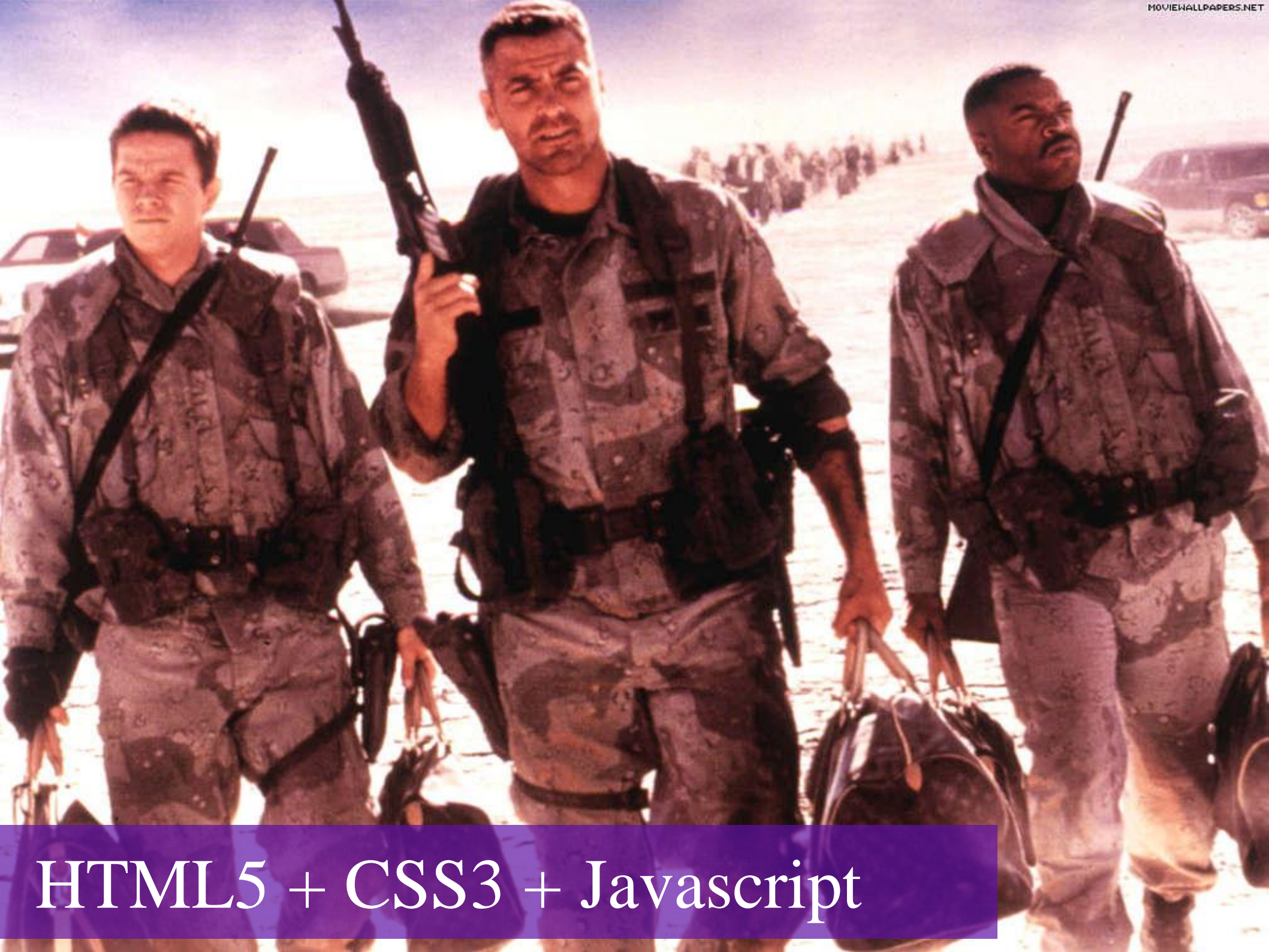
Lentitud

Monetización

Flexibilidad vs idoneidad



amias de desarrollo para web n



HTML5 + CSS3 + Javascript



Home / Products

Sencha Touch Mobile JavaScript Framework

[Buy Support](#)

[Download](#) ↓



The First HTML5 Mobile Web App Framework

Sencha Touch allows you to develop mobile web apps that look and feel native on iPhone, Android, and BlackBerry touch devices. [View Examples](#) ↓

[Find out about Touch Charts beta](#) ↓

[Overview](#)

[Demos](#)

[Touch Charts](#)

[Style & Design](#)

[Testimonials](#)

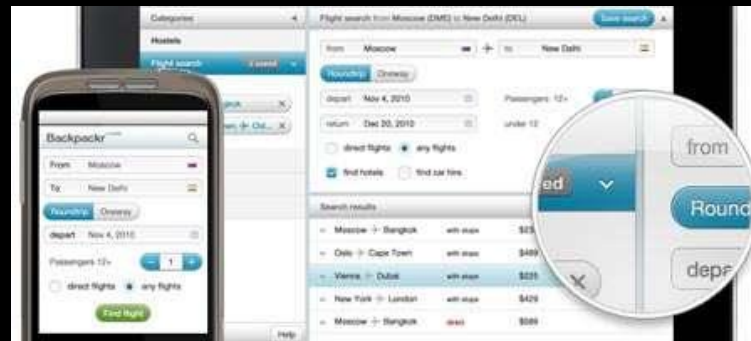
[Road Map](#)

[Licensing](#)

Y otros...



jqTouch



DynamicX

WINK
TOOLKIT
Webapp iNnovation Kit



WinK

jQuery Mobile

Multidispositivo



Checkboxes

Body swatch A

Controles & temas

Theming forms

Native form elements

Submitting forms

Flip switch:

Off

Slider:

0

Font styling:

b i u

Choose a pet:

Cat
 Dog
 Hamster
 Lizard

Choose shipping method:

Standard: 7 day

Soporte táctil



Ejemplos en jqmGallery



Box.net

(0) Comments



Thomas Hooker Brewery

(0) Comments



Cedric's Showcase

(0) Comments

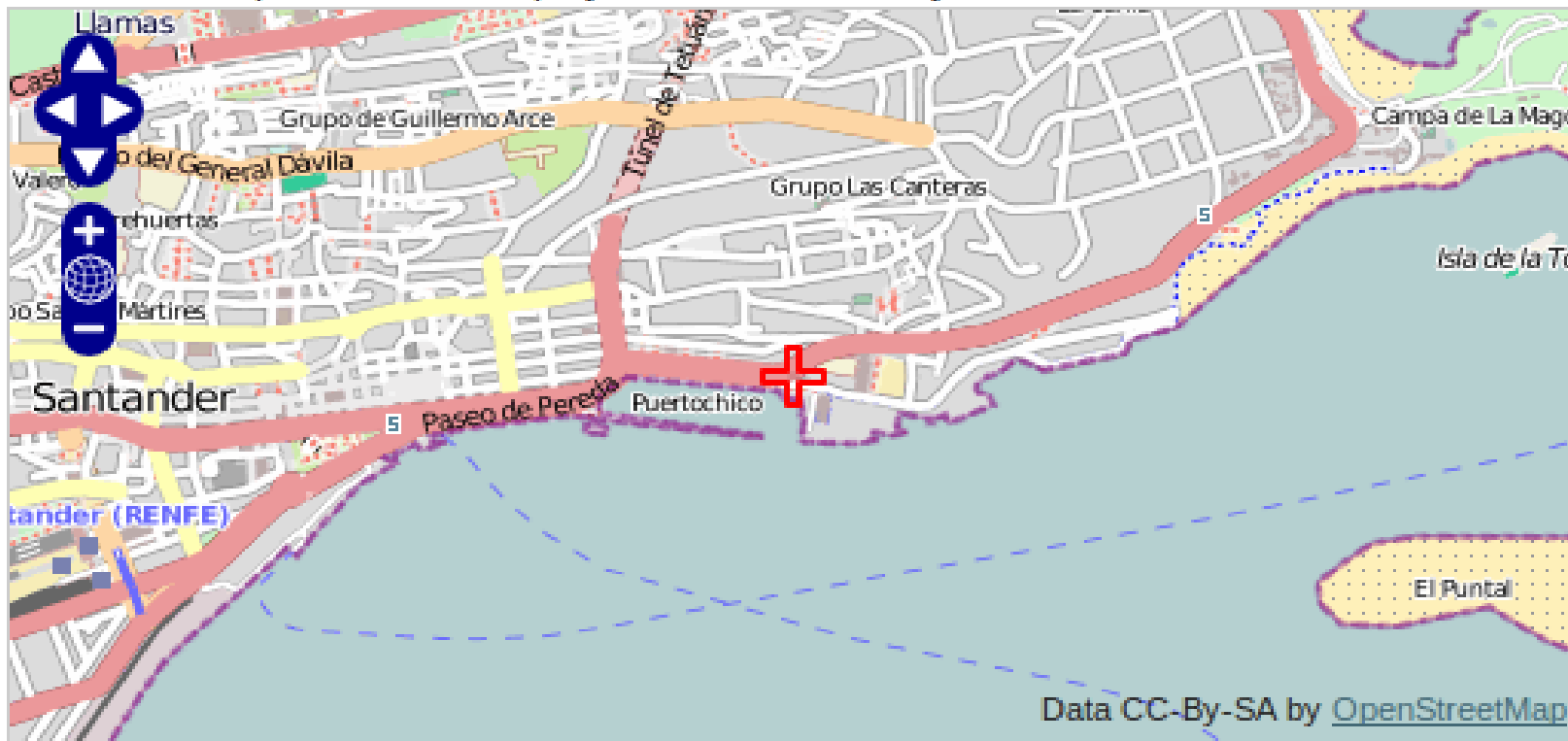


OpenLayers 2.11 y los dispositivos móviles

HTML5 Geolocation

Geolocation Example

Track current position and display it with its accuracy.



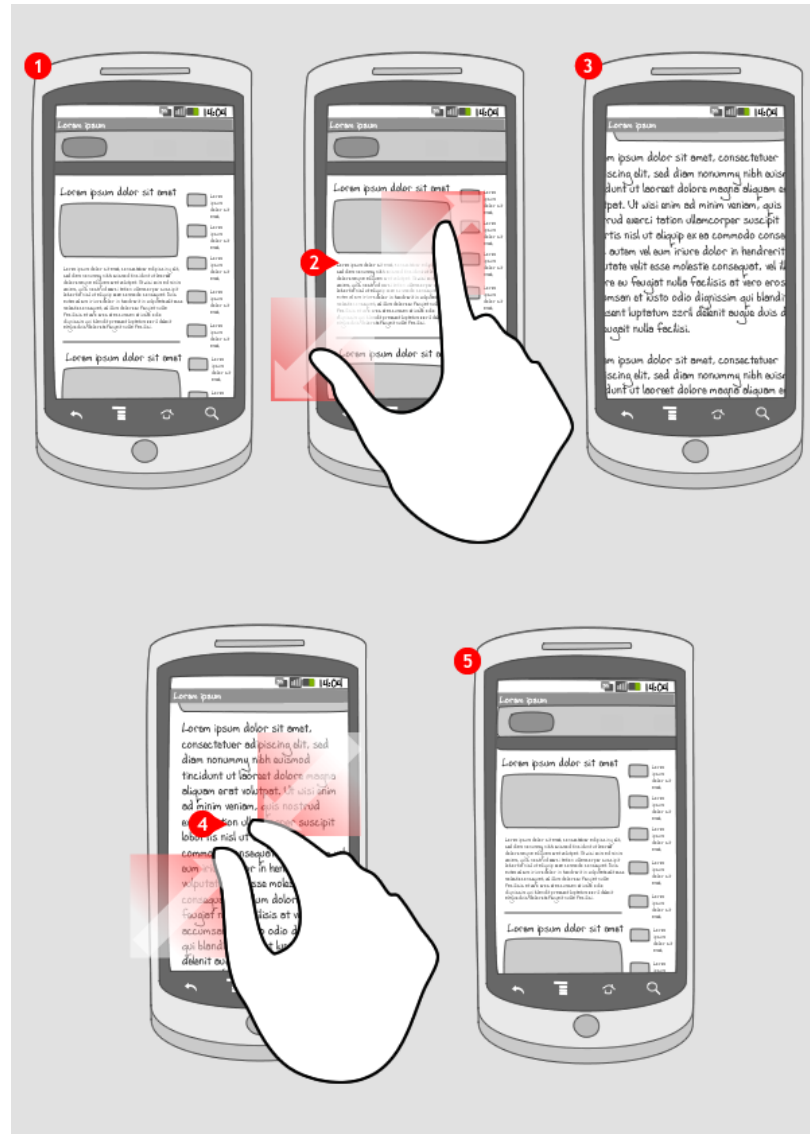
Locate me!

Track my position

View the [geolocation.js source](#) to see how this is done.

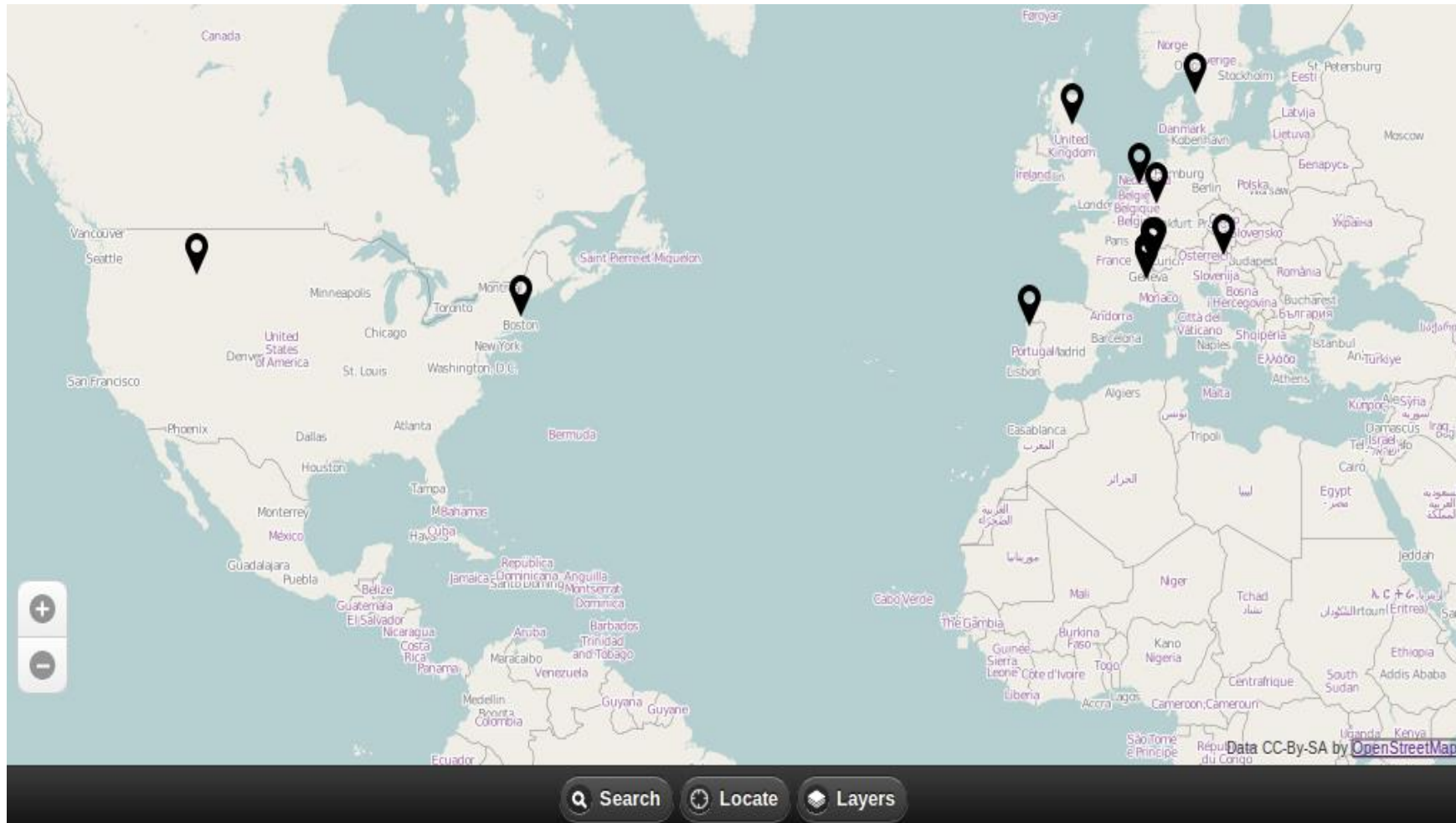
OpenLayers.Control.Geolocate

Controles y eventos táctiles



Pinch, TouchNavigation, +/-Accelerometer

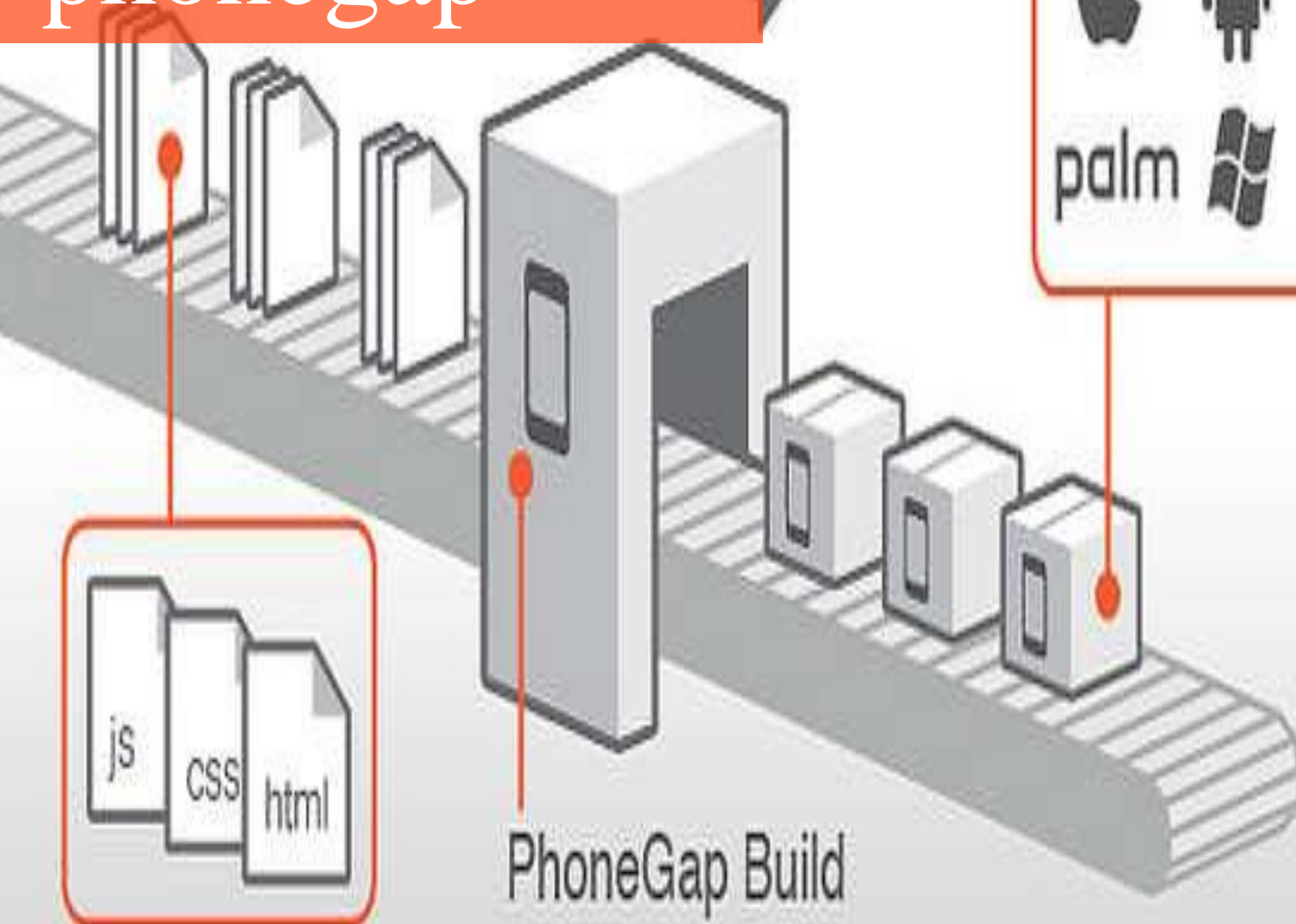
<http://m.openlayers.org/>



Ejemplos jQuery Mobile & Sencha Touch

Tendencias

phonegap



¿ WebApp API's ?



```
// ACCESO APIS
```

```
// Telefonía, agenda, cámara...
```

```
var call = navigator.telephony.open("tel:  
+33612341234");
```

W3C

STANDARDS PARTICIPATE MEMBERSHIP ABOUT W3C

WEB APPLICATIONS (WEBAPPS) WORKING GROUP

The W3C Web Applications (WebApps) Working Group is chartered to develop specifications for webapps, including standard APIs for client-side development, and a packaging format for installable webapps. This work will include both documenting existing APIs such as XMLHttpRequest and developing new APIs in order to enable richer web applications.

This group works in public, with details in the WG's Work Mode document and the WG's Wiki.

A detailed list of this group's publications and their status (available in one of the W3C's CVS or

GROUP DETAILS

- Charter
- Group Participants
- Wiki
- Known WebApps Issues
- Royalty-free Patent Policy

W
Ap
Int
An

Emuladores * Ripple chrome

The image displays the Ripple emulator interface, which is used for testing mobile applications. The central focus is a virtual smartphone screen showing the "PhoneGap Training App". The app has a white background with a grey header and two orange buttons: "Show My Location" and "Settings".

On the left side, there is an "Information" panel with the following details:

- PhoneGap: Getting Started
- Version: 1.0.0
- Selected Platform: PhoneGap VD.9
- Device: Generic - HVGA (320x480)
- OS: Generic Generic
- Manufacturer: Generic
- Screen: 320x480
- Density: 96 PPI
- Browser(s): Generic
- User Agent: Mozilla/5.0 (X11; U; Linux x86_64; en-US; AppleWebKit/533.2 (KHTML, like Gecko) Chrome/5.0.342.7 Safari/533.2

Below the information panel are expandable sections for "Platforms", "Accelerometer", and "Storage".

On the right side, there is a "Settings" panel with the following sections:

- Device & Network Settings
- Geo Location
 - Latitude: 43.45133
 - Longitude: -80.497191
 - Altitude: 100
 - Accuracy: 150
 - Altitude Accuracy: 80
 - Heading: 0
 - Speed: 0
 - GPS Delay (seconds): 0
 - Simulate GPS Timeout: [checkbox]
- A Google Maps view showing a location pin on a street grid. The map includes labels for "Victoria Park", "Victoria Hills", and "Victoria Park". The "Zoom Level" is set to 14.

El móvil es más fácil con herramientas

Recopilando...

y está a nuestro **alcance** con las **he**



No te quedes fuera...



Surfée la **web** móvil



GEORGE BEER & CO

PALE ALES



Algunas fuentes interesantes...

[2011–And.roid.es]: <http://goo.gl/340VM>

[2011–Wikipedia I] History of computing: <http://goo.gl/FmNnI>

[2011–Wikipedia II] ENIAC: <http://goo.gl/pK1Lr>

[2010–CNET Reviews] Cell phone to hit 5 bill. globally <http://goo.gl/5tPrg>

[2011–Minist. de Industria / ONTSI]: Indicadores TIC España: <http://goo.gl/T0qrW>

[2011–Blog Alberto Vilches] Aplicaciones web vs. Nativas: <http://goo.gl/E4k2m>

[2011–Surfspots]:

•Página: www.surfspots.es

•Facebook: <http://es-es.facebook.com/SurfSpots>

•Reportaje TVE - E+I Emprendedores e Innovadores: <http://goo.gl/HAcM0>